

# Evaluation Kit for SA305EX 3Ø BLDC Motor Driver

## INTRODUCTION

The EK62 evaluation kit is designed to provide a convenient way to breadboard design ideas for the SA305EX three Ø BLDC motor driver IC. The PB119 evaluation board is pre-wired for all required and recommended external components including the ones for power supply bypassing and current sensing. The PB119 also includes a breadboard area for constructing your application circuit.

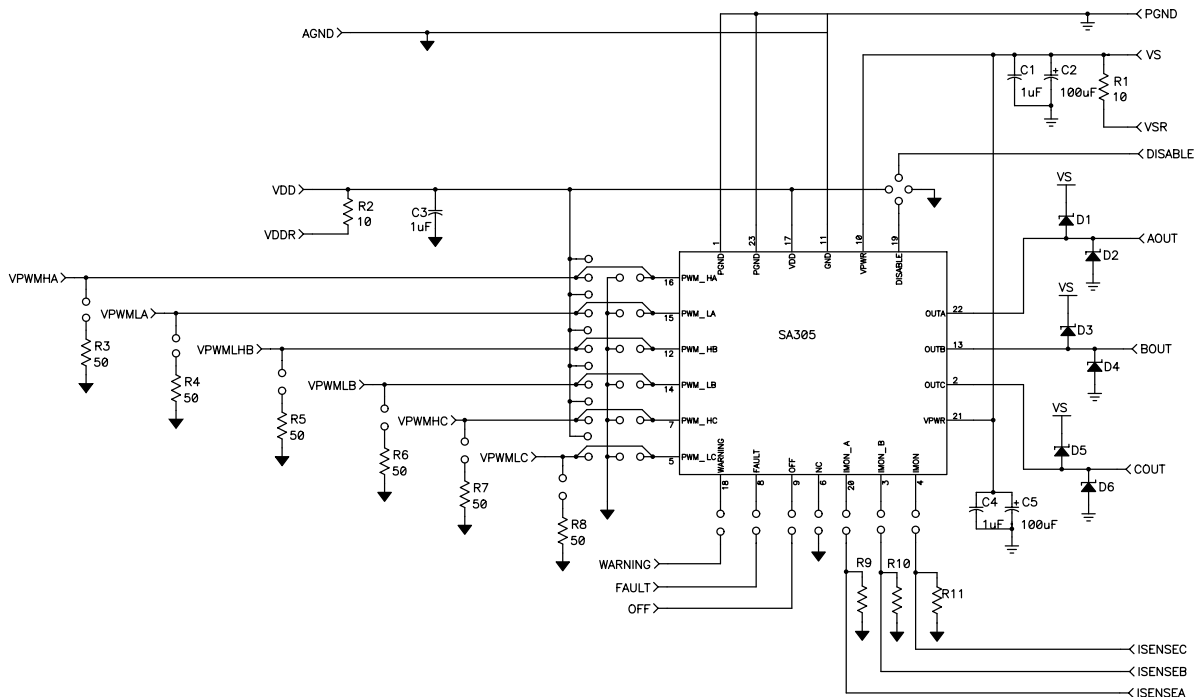
## PARTS LIST

Ref	Apex P/N	Description/Vendor	Qty
N/A	HS14	Heat Sink	1
	29372326215	SIP Socket, Loranger	1
N/A	PB119	PC board	1
Many	571-0100	Banana Jack (Blk), Deltron	12
	571-0500	Banana Jack (Red), Deltron	5
	571-0600	Banana Jack (Wht), Deltron	5
C1, C4	OX7R105KWN	1 µF cap, Novacap 1825B105K201N	2
C2, C5	140-ESRL100V100	100µF cap, Xicon	2
N/A	TW12	Thermal Washer, Apex	1 Box
N/A	91920A865	Standoffs, McMaster-Carr	4

Recommended Components (included in EK kit)

D1-D6	SB5100-T	Diode, 100V, 5A	6
-------	----------	-----------------	---

## SCHEMATIC

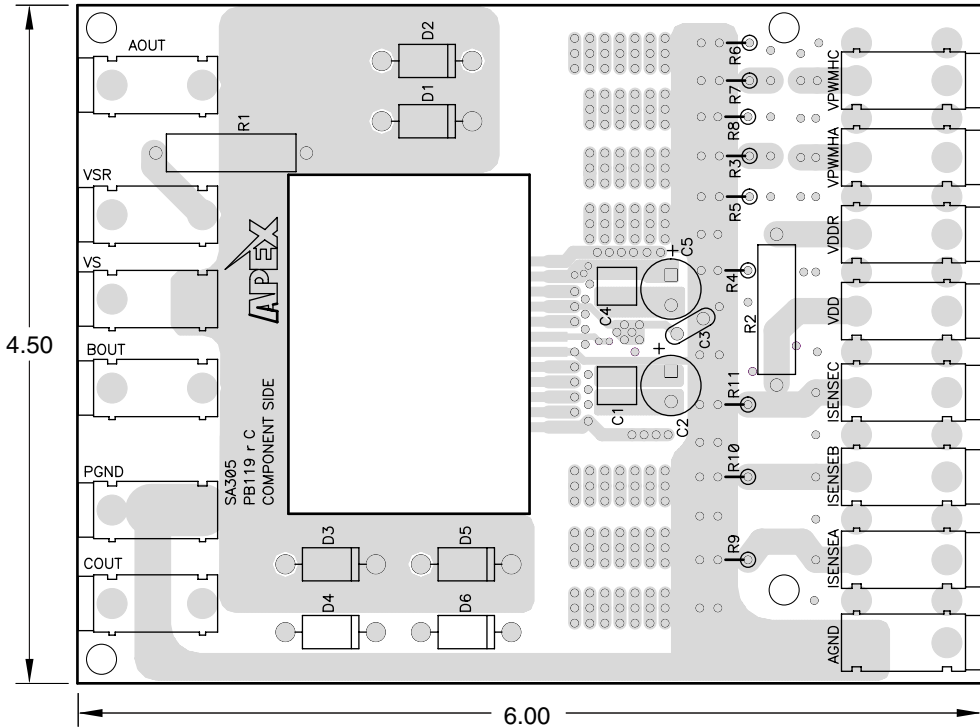


**ASSEMBLY**

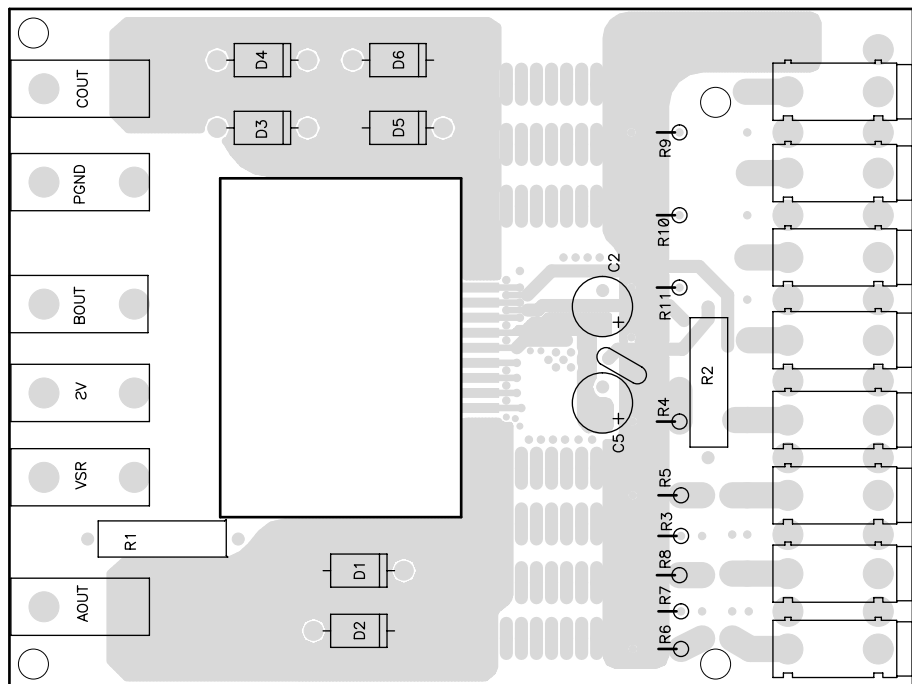
1. Solder surface mount ceramic capacitors C1 and C4 on the component side of the board.
2. Solder the SIP socket into the board. Insert the IC fully into the socket, noting the pin 1 location on the IC and the circuit board.
3. Add 3 resistors for current sense. Refer to SA305U datasheet for acceptable values and power dissipation ratings of current sense resistors.
4. Install the banana jacks for signals and power. Please note that the banana jacks need to be installed on both sides of the board as shown in figure (only for low voltage signals and Vdd on the bottom end of the board).
5. Mount the electrolytic capacitors C2 and C5 in the specified location in the board.
6. Solder the diodes D1-D6 provided with the kit for high current applications.
7. Mount the standoffs in the four holes provided in the board.
8. If a heat sink is used, position the thermal washer behind the package tab of the IC in such a way that the hole on the washer coincides with the hole on the tab and the heat sink. Attach the IC to the heat sink in such a way that the pins hang out of the heat sink. In the PC board remove the two standoffs on the top of the board. Carefully insert the part with the heat sink into the socket.

**PCB LAYOUT**

TOP VIEW



BOTTOM VIEW





---

## CONTACTING CIRRUS LOGIC SUPPORT

For all Apex Precision Power product questions and inquiries, call toll free 800-546-2739 in North America.

For inquiries via email, please contact [tucson.support@cirrus.com](mailto:tucson.support@cirrus.com).

International customers can also request support by contacting their local Cirrus Logic Sales Representative.

To find the one nearest to you, go to [www.cirrus.com](http://www.cirrus.com)

---

### IMPORTANT NOTICE

Cirrus Logic, Inc. and its subsidiaries ("Cirrus") believe that the information contained in this document is accurate and reliable. However, the information is subject to change without notice and is provided "AS IS" without warranty of any kind (express or implied). Customers are advised to obtain the latest version of relevant information to verify, before placing orders, that information being relied on is current and complete. All products are sold subject to the terms and conditions of sale supplied at the time of order acknowledgment, including those pertaining to warranty, indemnification, and limitation of liability. No responsibility is assumed by Cirrus for the use of this information, including use of this information as the basis for manufacture or sale of any items, or for infringement of patents or other rights of third parties. This document is the property of Cirrus and by furnishing this information, Cirrus grants no license, express or implied under any patents, mask work rights, copyrights, trademarks, trade secrets or other intellectual property rights. Cirrus owns the copyrights associated with the information contained herein and gives consent for copies to be made of the information only for use within your organization with respect to Cirrus integrated circuits or other products of Cirrus. This consent does not extend to other copying such as copying for general distribution, advertising or promotional purposes, or for creating any work for resale.

CERTAIN APPLICATIONS USING SEMICONDUCTOR PRODUCTS MAY INVOLVE POTENTIAL RISKS OF DEATH, PERSONAL INJURY, OR SEVERE PROPERTY OR ENVIRONMENTAL DAMAGE ("CRITICAL APPLICATIONS"). CIRRUS PRODUCTS ARE NOT DESIGNED, AUTHORIZED OR WARRANTED TO BE SUITABLE FOR USE IN PRODUCTS SURGICALLY IMPLANTED INTO THE BODY, AUTOMOTIVE SAFETY OR SECURITY DEVICES, LIFE SUPPORT PRODUCTS OR OTHER CRITICAL APPLICATIONS. INCLUSION OF CIRRUS PRODUCTS IN SUCH APPLICATIONS IS UNDERSTOOD TO BE FULLY AT THE CUSTOMER'S RISK AND CIRRUS DISCLAIMS AND MAKES NO WARRANTY, EXPRESS, STATUTORY OR IMPLIED, INCLUDING THE IMPLIED WARRANTIES OF MERCHANTABILITY AND FITNESS FOR PARTICULAR PURPOSE, WITH REGARD TO ANY CIRRUS PRODUCT THAT IS USED IN SUCH A MANNER. IF THE CUSTOMER OR CUSTOMER'S CUSTOMER USES OR PERMITS THE USE OF CIRRUS PRODUCTS IN CRITICAL APPLICATIONS, CUSTOMER AGREES, BY SUCH USE, TO FULLY INDEMNIFY CIRRUS, ITS OFFICERS, DIRECTORS, EMPLOYEES, DISTRIBUTORS AND OTHER AGENTS FROM ANY AND ALL LIABILITY, INCLUDING ATTORNEYS' FEES AND COSTS, THAT MAY RESULT FROM OR ARISE IN CONNECTION WITH THESE USES.

Cirrus Logic, Cirrus, and the Cirrus Logic logo designs, Apex and Apex Precision Power are trademarks of Cirrus Logic, Inc. All other brand and product names in this document may be trademarks or service marks of their respective owners.